

  
**COMMUNITY**  
T O W E R S

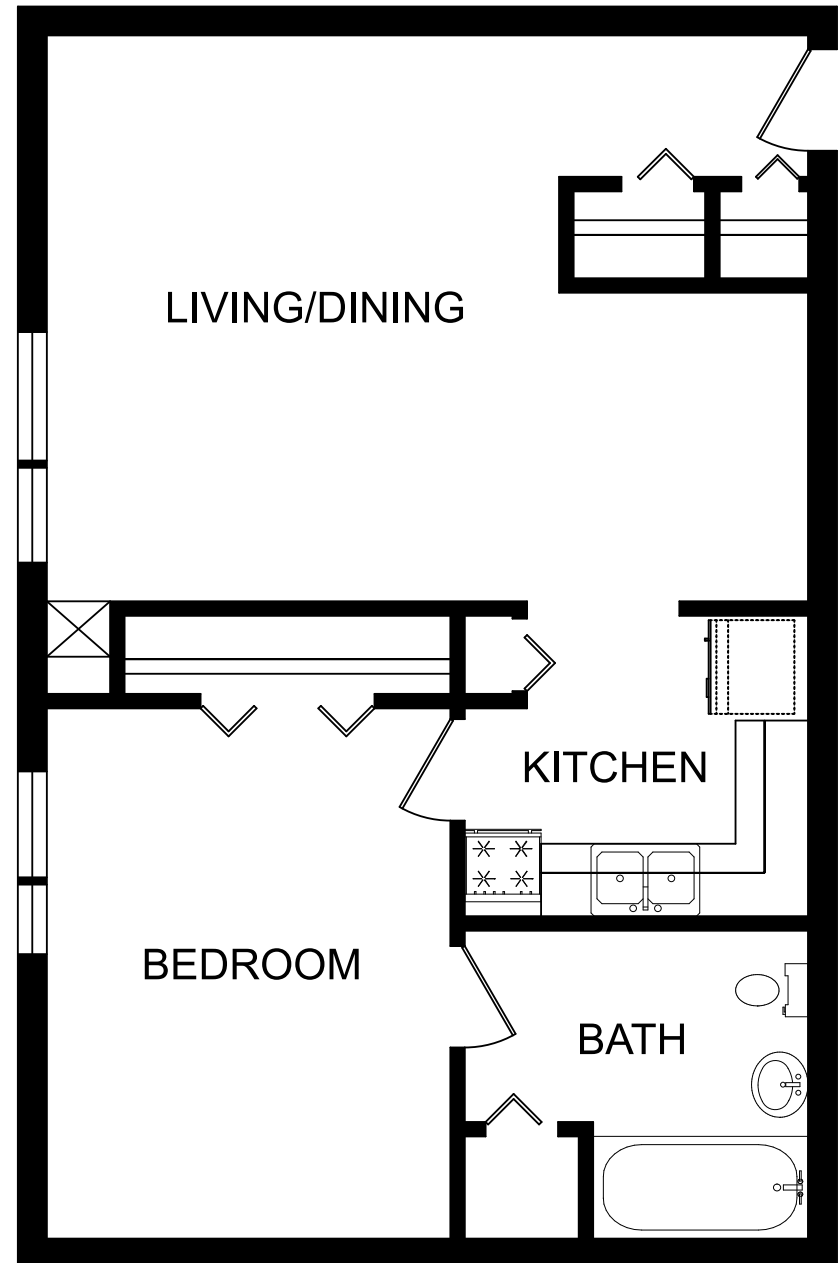
**Interior Luxuries Include:**

- Frost-Free Refrigerator
- Ceiling Fans
- New cabinets
- New appliances
- Spacious Floorplans
- Generous closets
- New carpet and tile flooring
- Central heat and air
- Large floor plans with great design
- Designer interior neutral color scheme

**Community Distinctions include:**

- On-Site Laundry Facilities
- Newly renovated community room with large screen TV, DVD, surround sound and computer area for resident use.
- Fitness room with treadmill, bicycle and wallmounted TVs with cable.
- Pool table
- Kitchen in basement with all new appliances, cabinets and flooring.
- Resident activities include movie night, game night, computer classes and day trips.
- Located close to shopping, entertainment and schools
- Superior resident service

**Alton**  
**1 bedroom/1 bath room**  
**Approximately 700 square feet**



2526 W. Madison St., Louisville, KY 40211  
(502) 772-2589 \* (502) 776-2099 fax  
[www.communitytowersky.com](http://www.communitytowersky.com)

The floor plans may vary from this illustration due to design configuration. Not all features are available in every floor plan. Square footages and room dimensions are approximate.

